



Disappearing Screens

R. Lang Company

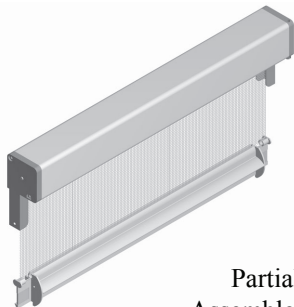
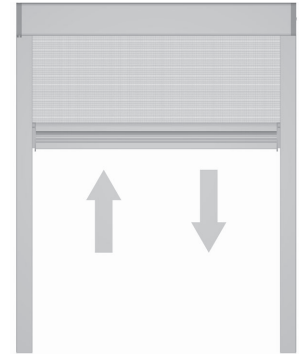
## ROLL AWAY® Series 4000

### Installation Instructions (Window Screen)

#### TOOLS REQUIRED:

- Tape Measure
- Phillips Head Screwdriver
- Drill Motor & 3/32" Drill Bit
- Pencil or Scribe
- File
- Scissors
- Utility Knife
- Level

IMPORTANT:  
REVIEW ALL INSTRUCTIONS  
THOROUGHLY  
BEFORE STARTING STEP 1



Partially  
Assembled Unit

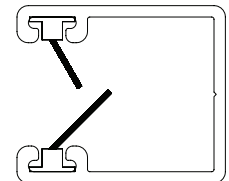
#### PARTS INCLUDED:



Flat Head Screw  
#6 x 3/4"



R4060 & R4070 left and right  
Guide Locks  
With R4280 magnets installed



R2040 with  
Meshlock™ Installed

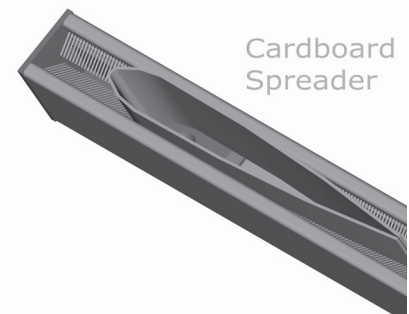
### Step 1

#### Verify Part Lengths Required

R2040 guides should measure the opening height minus 1 15/16".

The completed canopy assembly should measure the opening width minus 1/16".

Note: The Mesh Lock™ can obscure the guide locks and canopy end cap guide runners. A 1" wide, 8" long piece of thin cardboard folded in the middle can be inserted into the guide channel to make the bottom of the channel visible.



Cardboard  
Spreader

## Step 2 Test & Pretension the screen for operation.

The ROLL AWAY® window screen was shipped with a minimal amount of tension on the screen. Test the tension on the screen by holding the canopy horizontally, withdrawing the screen from the canopy, and allowing it to retract, taking care to keep the screen within the canopy end cap guide runners. If the screen does not fully retract, add tension to the spring by engaging the tension adjustment screw with a #2 Phillips bit and turning the tension adjustment screw counterclockwise. It will require 30 turns of the tension adjustment screw to add one turn of tension to the spring. Add just enough tension to keep the drawbar against the canopy as shown in Figure 1.

### CAUTION!

*Over tensioning the spring can destroy it and void the product warranty.*

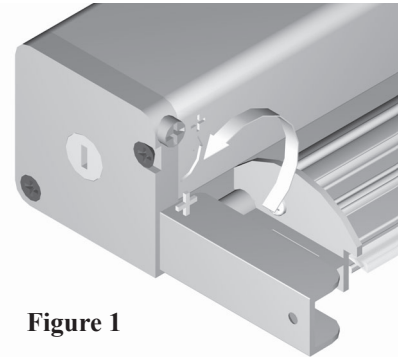


Figure 1

**Do not push the adjustment screw.** Use firm pressure when adjusting the tension.

**NOTE:** Counterclockwise adjustment will increase spring tension.

## Step 3 Install guide locks in guides.

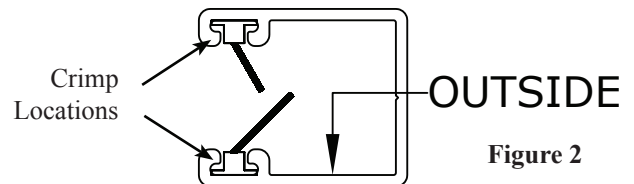


Figure 2

Locate the guides (R2040) Note that the Mesh Lock™ has long brushes and short brushes. The long brushes go to the outside of your building (Figure 2). Mesh Lock™ is crimped in place to avoid movement. If Mesh Lock™ slides out of the channel, re-position in the channel and crimp (squeeze) the end with pliers to secure in place before guides are installed.

**MAGNET GOES TO OUTSIDE**

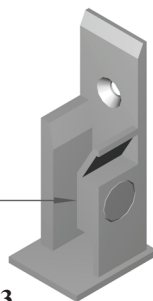


Figure 3

Locate the guide locks (R4060 and R4070) and install them in the guides (R2040), insuring they are seated all the way to the bottom flange. The magnet goes to the outside of your building (Figure 3).

## Step 4 Trim the Mesh Lock™ at the magnets.

If the guide locks are installed correctly, the Mesh Lock™ long brushes cover the magnets in the guide locks. To insure proper operation of the magnetic latch, the long brush must be trimmed away at the magnet. Using a utility knife or scissors, cut the long brush away for a distance of 1 inch, from the bottom of the guide (Figure 4). Repeat for both guides.

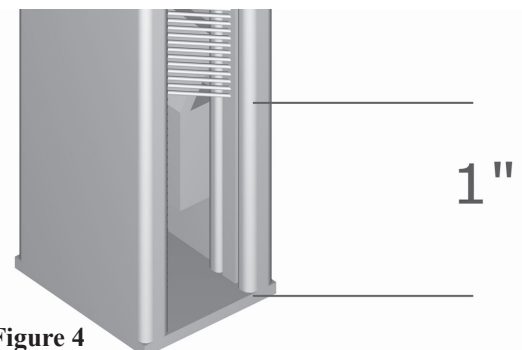


Figure 4

## Step 5

### Assemble guides to canopy.

Preassemble the ROLL AWAY® screen on the floor or other flat surface. Slide the guides (R2040) onto the canopy end cap guide runners, with the openings facing each other. Make sure they are placed on the correct sides of the canopy. The guide locks must be installed on the correct side of the canopy to operate.

## Step 6

### Place assembled unit into window opening.

Lift the assembled ROLL AWAY® screen by the guides (R2040) and place into the window frame. Do not bend the canopy end cap guide runners or excessive stress could cause damage. To allow proper operation of the screen (and window) there should be at least 1/8" clearance between the ROLL AWAY® screen and the window frame. **Make sure the ROLL AWAY® is properly aligned and square in the opening. It is particularly important that the guides are parallel** (Figure 5).



Figure 5

## Step 7

### Fasten canopy to window frame.

After checking for proper alignment, fasten the canopy end cap guide runners and the top of each guide to the window frame (Figure 6). Using the 3/32" drill bit, from the guide channel opening locate the countersunk hole in the canopy end cap guide runner and drill through the guide. (Note: Do not penetrate the wood deeper than 1/8" or the screw will not hold.) Use the #6 flat head screws provided to fasten the canopy and guides in place.

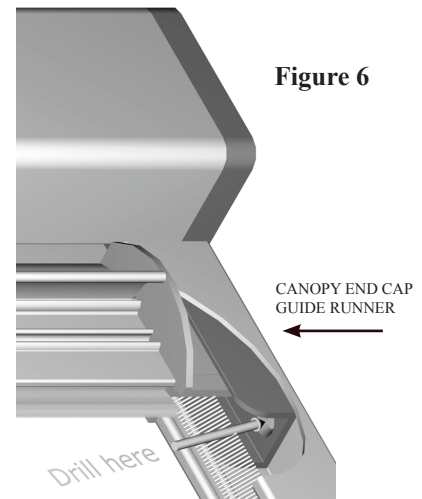
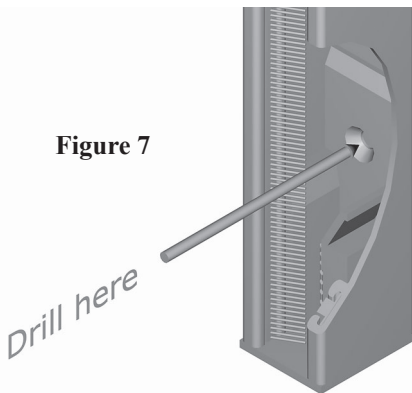


Figure 6

Figure 7



## Step 8

### Fasten guide locks to window frame.

After checking for proper alignment, fasten the guide locks and the bottom of each guide to the window frame. Using the 3/32" drill bit, from the guide channel opening locate the countersunk hole in the guide lock and drill through the guide (Figure 7).

**Note: Do not penetrate the wood deeper than 1/8" or the screw will not hold.** Use the #6 flat head screws provided to fasten the guide locks and guides in place.

## Step 9

### Tension the screen and test for operation.

Tension the ROLL AWAY® window screen by drawing the screen out of the canopy approximately 8" (Figure 8) and add tension to the spring by engaging the tension adjustment screw with a #2 Phillips bit and turning the tension adjustment screw counterclockwise.

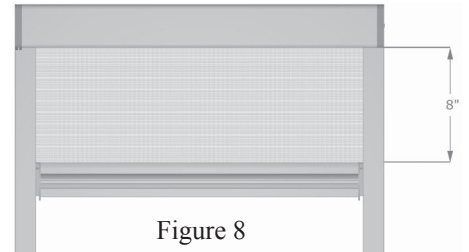


Figure 8

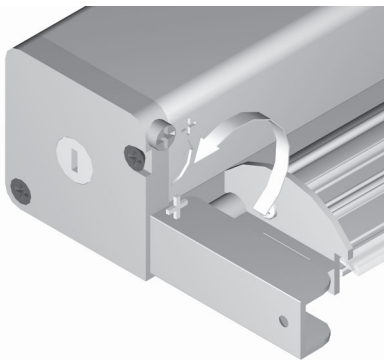


Figure 9

Test the tension on the screen by drawing the screen all the way to the guide locks and releasing. If the screen is tensioned properly, it should retract all the way to the canopy and just touch it. If it hits the canopy with force, there is too much tension and some will have to be relieved by turning the tension adjustment screw clockwise. If there is still insufficient tension, repeat tensioning procedure as necessary.

## CAUTION!

*Over tensioning the spring can destroy it and void the product warranty.*

## Installation Complete

Make sure all components are properly installed. Check the overall operation of the ROLL AWAY® window screen. The drawbar end caps should move freely in the guides and engage the guide locks.

## ROLL AWAY® LIMITED LIFETIME WARRANTY

(See Page 5 for warranty details)



Disappearing Screens

# R. Lang Company

**Limited Lifetime Warranty**  
**ROLL AWAY® Window Screens (Series 2000 & Series 4000)**  
*Our History Speaks for Our Quality*

The R. Lang Company was established in 1967, and retractable screen systems are how we began. We have always manufactured our products in the USA and continue to do so today. With over 50 years of successful retractable screen manufacturing behind us, we stay as we have always been, committed to making products that you're happy to add to your home.

We are confident in our Products & Processes and provide the following "Limited Lifetime Warranty".

**Warranty Claim Process:**

Any product rework must be pre-approved. In most cases, we recommend that the product be returned for correction to our facility in Visalia, California. This warranty includes the costs of shipping all defective products for the first six (6) months after the initial purchase. After the first six (6) months from initial purchase date, the buyer will be responsible for all shipping costs to/from our facility when required.

All warranty claims must be submitted by the original purchaser of the product from R. Lang Company for validation purposes. You must provide an original invoice number for verification. R. Lang Company reserves the right to inspect and test products to determine the validity of any Warranty Claim made or perceived, and R. Lang Company is the final judge as to its cause and rectification processes.

**What Is Covered:**

Our Limited Lifetime Warranty is valid for the original purchaser of our retractable window screen(s) only, and only when the screen has been installed permanently in a single location.

Our Limited Lifetime Warranty is non-transferable, and is the only valid Warranty, implied or otherwise, in connection with our retractable window screens. In no other event shall R. Lang Company be held liable for direct or indirect loss, consequential damage(s), or any other claims except as provided for in this warranty.

Our Limited Lifetime Warranty assures the workmanship and materials (Screen Mesh/Mesh Lock/ Weather Stripping Excluded) utilized in our retractable window screens will be free from defects, under normal use, to the original purchaser in a single location, for a lifetime. The R. Lang Company will repair or provide replacement product, at its election, free of charge, for any product proven to have a manufacturing defect during the lifetime of the product up to a maximum liability which shall be equal to the cost of replacement of the defective product. R. Lang Company shall in no event be liable for labor charges or other expenses whatsoever in connection with removal or installation of either the original or replacement product. In the event of repair or replacement pursuant to terms of this warranty, the original warranty shall apply to the repaired or replacement product. In lieu of replacement/repair, R. Lang Company, at its sole discretion, reserves the right to refund up to the amount paid by the original purchaser of the product but not including any installation/removal costs, consequential damage costs, or any other costs whatsoever. The term "defect" as used in this warranty is defined as imperfections which impair the utility/intended use of the retractable window screen and are generally not applied to perceived issues deemed 'aesthetic' or 'subjective judgements'.

Our Limited Lifetime Warranty is only valid when all retractable window screens are installed in accordance with R. Lang Company Installation Instructions (Available in both Text and Video formats). Retractable window screens installed incorrectly, in applications for which they were not intended, damaged during installation, or not installed in accordance with R. Lang Company accepted methods, are NOT eligible for coverage under this or any other warranty, implied or otherwise.

Our Limited Lifetime Warranty is intended to cover individual homeowners and does not apply to retractable window screens installed in commercial or public use applications. Our Retractable Screens are intended for Interior Applications Only, any Exterior Applications or constant exposure to outdoor elements will result in the Warranty being void.

Our Limited Lifetime Warranty expressly excludes the Screen Mesh and Mesh Lock components, and the Weather Stripping, which includes rips, tears, separation, fraying, and/or snags in or on screen material, or the detaching of the screen material from the inner tube or drawbar. Wrinkles in the mesh or puckering along its edges does not constitute a defect. Different mesh utilized, the screen's size, its location, and even atmospheric conditions, may cause variations in the mesh's appearance and/or smoothness of extension/retraction, and are therefore not considered "defects" under the terms of this warranty.

Our Limited Lifetime Warranty does not cover changes/fading/chalking in all coated finishes of all parts as it is an expectation this may take place with the passage of time but in no way affects the operation of the retractable window screen.

Our Limited Lifetime Warranty does not cover damage caused by misuse, abuse, negligence, scratching, corrosive atmosphere contaminants, vandalism, modifications, or any 'Act of God', or other causes reasonably beyond the control of the R. Lang Company.

Our Limited Lifetime Warranty assumes the original purchaser of the retractable window screen(s) will diligently perform all expected maintenance tasks as outlined by R. Lang Company (Available in both Text and Video formats). Retractable window screens lacking maintenance as outlined by R. Lang Company, or found to have a defect caused wholly or in part by improper maintenance, are NOT eligible for coverage under this warranty or any other warranty.

*This Document expresses the entire liability of R. Lang Company with respect to its retractable window screens.*

*Some States do not allow limitations or exclusions as set forth, so the above limitations or exclusions may not apply to you.*